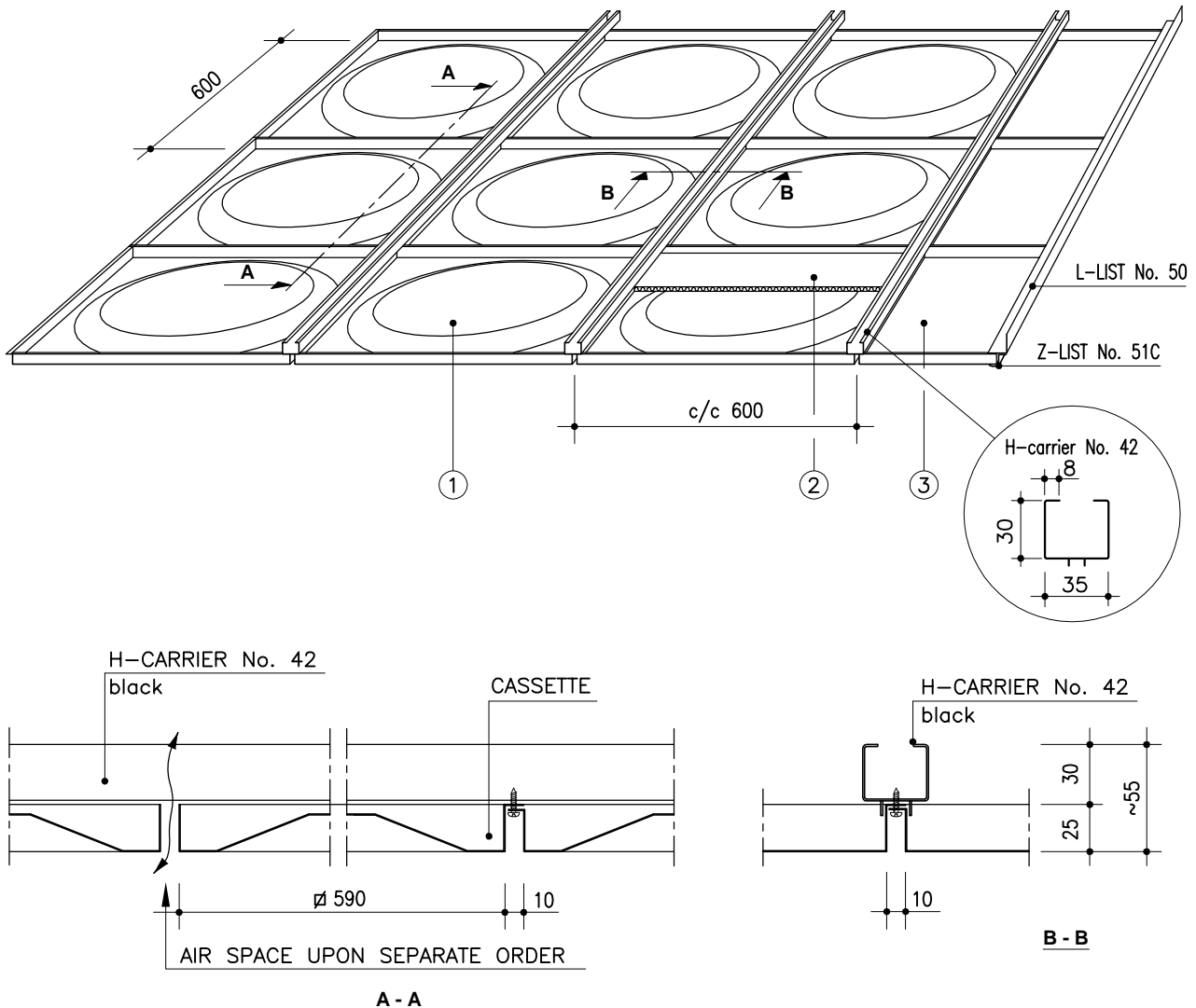


MARINE CASSETTE LAUTEX WL-600



WL-600 CASSETTES / CLASSIFICATION "C"

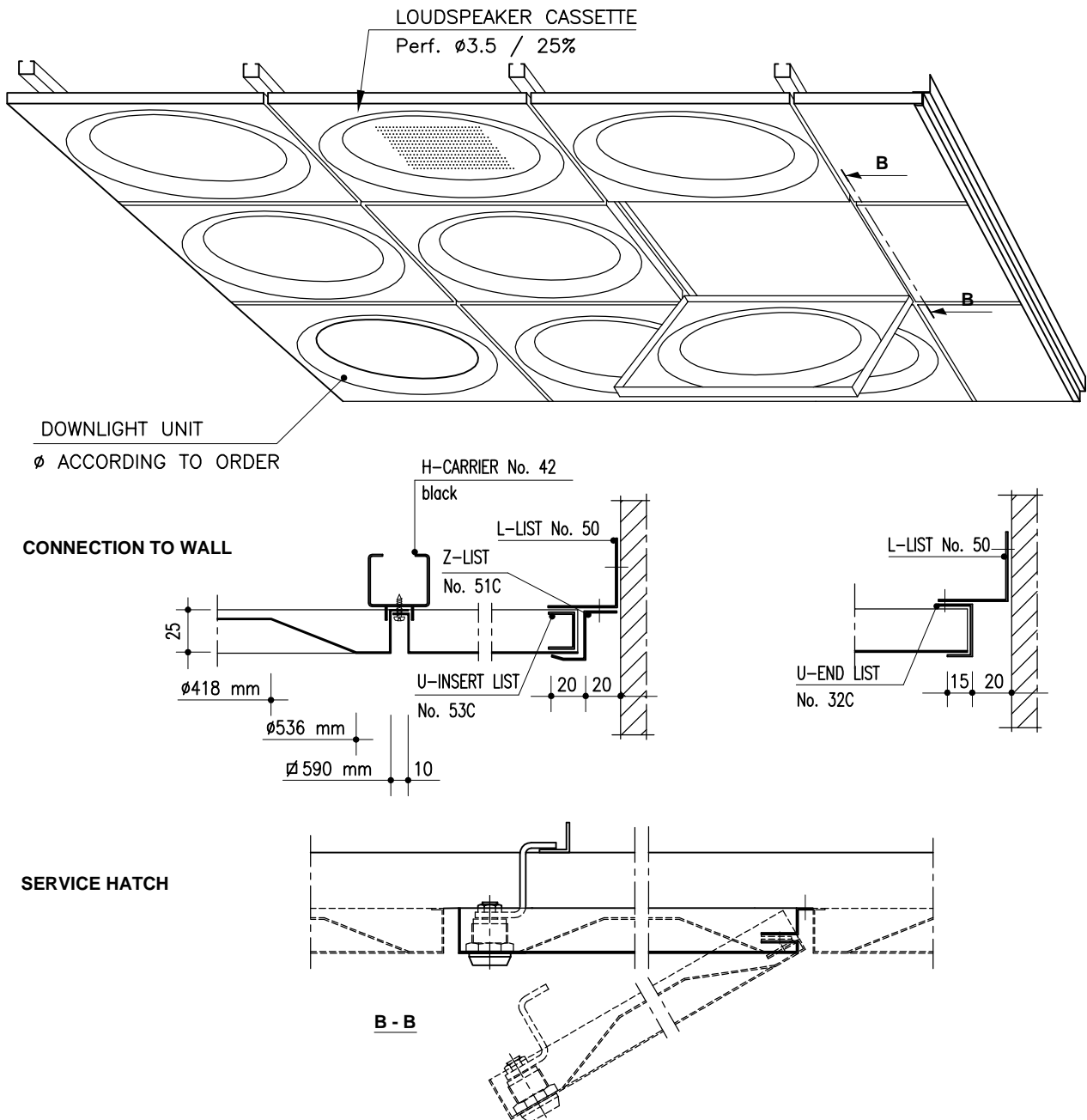
Material	0.5 Steel
Module	600x600 mm
Height	25 mm
Perforation	none
Inlay	mineral wool in plastic
Finish	stove enamelled according to LTX-colour card or any other well-known colour charts
Ventilation	installation also with air space
Protective film	the surface is provided with a protective film if required
Service hatch	see page 2
Loudspeaker	perforated cassette with $\varnothing 3.5\text{mm}$ / 25% area
Downlight unit	see page 2
Edge lists	see "Lists-01" and "Lists-02"
Suspensions	see "Suspensions systems for L-type cassettes"
Other special solutions	please contact our technical information department

- ① = WL-600; unperforated without acoustic inlay
- ② = WLT-600; unperforated. with mineral wool in plastic
- ③ = NL-600; fitting cassette NL-600 (0.7 Al)

Latest information: www.lautex.com

All products are subject to modifications without prior notice 2011

MARINE CASSETTE LAUTEX WL-600 INSTALLATION DETAILS AND ACCESSORIES



THEORETICAL NEED OF SUSPENSION STRUCTURES

Product	Need of material
Carrier No. 42	1.8 m/m ²
L-list No. 50	0.8 - 1.4 m/m ²
Z-list No. 51C	0.8 - 1.4 m/m ²

WEIGHT OF CEILING

Cassette	WL-600
Material	0.5 Steel
Weight	4.6 Kg/m ²

WEIGHT OF OTHER CEILING MATERIALS

Product	Weight of material
Carrier No. 42 (1.0 Steel)	0.83 kg/m
L-list No. 50 (1.0 Al)	0.21 kg/m
Z-list No. 51C (1.0 Al)	0.16 kg/m
Mineral wool in plastic	0.52 kg/m ²

Latest information: www.lautex.com

All products are subject to modifications without prior notice 2011